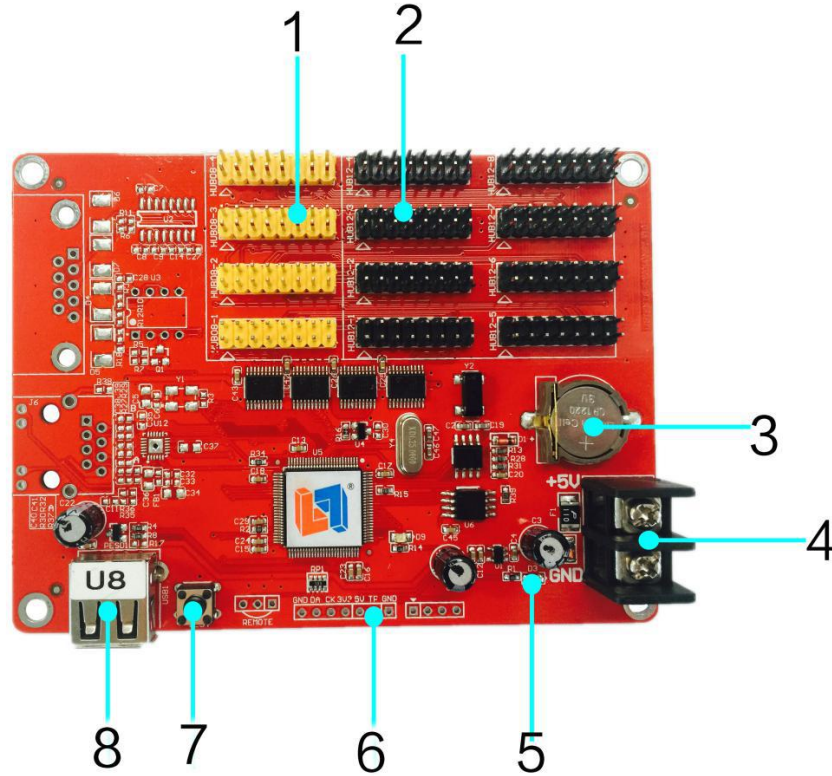


SPECIFICATION FOR U8

Version	Date	Reason
V2.00	07/08/2015	Document

Hardware



Number	Name	Description
1	HUB08 Interface	Connect HUB08 interface
2	HUB12 Interface	Connect HUB12interface
3	RTC Battery	RTC supplying battery, voltage3V
4	5V Power Port	Wide voltage 3.5V-6V
5	5V Power Light	Show power status
6	Sensor Interface	Connect temperature sensor
7	Multi-functional Button	functions : 1.test LED screen 2.factory data reset
8	USB Interface	USB interface

Product Parameters

Storage	2MByte
Application	All LED screen
Pixels	Single 128K 点 double 64K 点
Load	Single 2048*64 2048*32 1344*48 1024*64 Double 1024*64 512*128
Software Function	Multi-area, multi-language
Programs	128 programs , each has 16 areas
Area Type	Image&text/subtitle/animation/time/analog clock/count up & down/temperature
Frame	Program water frame/ area water frame
Clock	Digit clock/analog clock/count up and down
Communication Interface	USB interface
Display Interface	1*HUB08 ,2*HUB12
Sensor	Temperature sensor
Brightness Adjustment	16 level, adjust brightness automatically or via software
Remote Switch	Switch on or off automatically or via software
Voltage	3.5V~6V
Max Power	< 1W
Temperature	-40℃-85℃
Secondary Development	DLL dynamic library
Auxiliary Product	LED Player 6.0

Dimension Drawing

